



Produced by
Developmental Neurosciences and
Learning Disabilities Directorate
Mytton Oak
Royal Shrewsbury Hospital North
Shrewsbury
SY3 8XQ



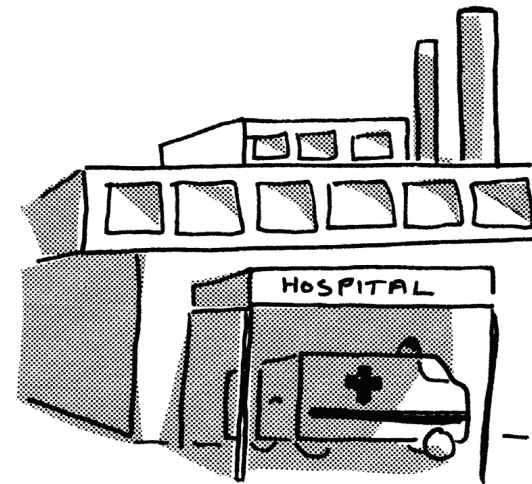
Tel 01743 261181

DNLDD/087
Reviewed November 2008

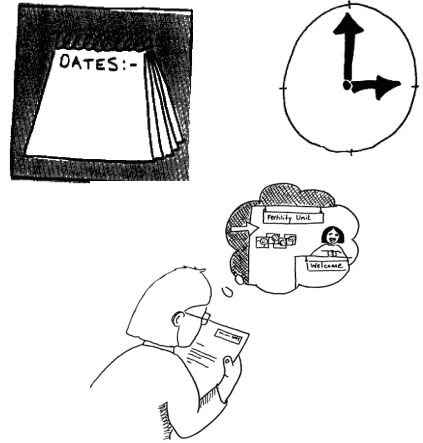


With acknowledgment to Change Picture Bank
And
Boardmaker www.mayer-johnson.com

Going Into Hospital

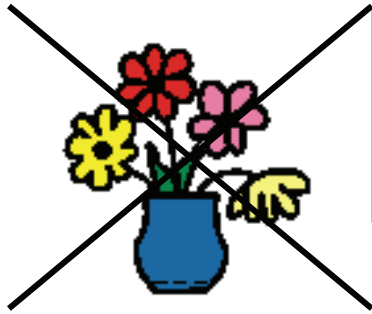
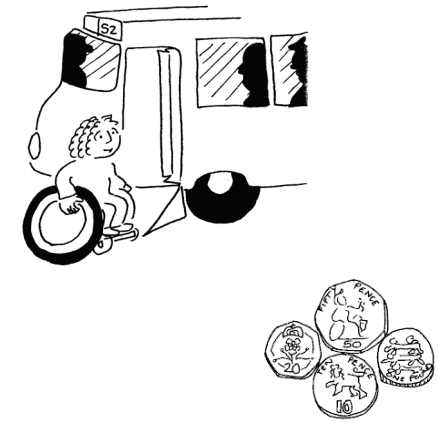


This leaflet helps you, your friends
and family when you go into
hospital.



Take with you the letter. It tells you the time and date you are going into hospital for your treatment.

- Other Things
- ◆ Find out how to get there.
 - ◆ Is there a bus service?
 - ◆ Do you have to pay for car parking?
 - ◆ If you are on benefits you may be able to claim for your travel.



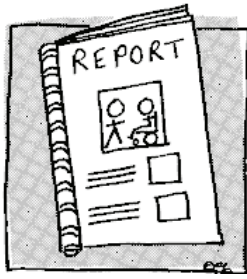
Some wards ask you not to bring in flowers.



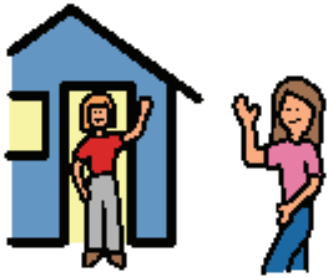
If you need help contact the Patient Advice Liaison Service (PALS)

Princess Royal Hospital
Telford
01952 282888

Royal Shrewsbury Hospital
01743 261691



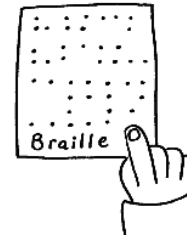
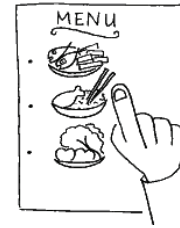
The Hospital now has guidelines for the care of a person with a learning disability when in Hospital. Ask the staff if they have these .



Visiting hours

Some wards have set visiting times.

Your family and friends can also ring the hospital to see how you are.



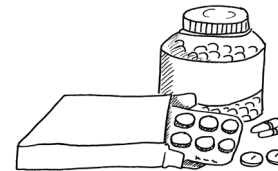
Tell the hospital if you need anything special before you go in:

- Food
- Communication
- Special needs



With a bedside phone you can talk directly to your family and friends.

These phones are only at the Princess Royal Hospital Telford.



You will need to take with you:

- ◆ Your letter
- ◆ Patient Passport
- ◆ Grab Sheet
- ◆ Tablets/Cream



You will need to take toiletries :

- ◆ Toothbrush
- ◆ Toothpaste
- ◆ Shaving kit
- ◆ Hairbrush or comb
- ◆ Tissues
- ◆ Soap, facecloth towel
- ◆ Sanitary towels

You will need to take clothing:

- ◆ Nightwear
- ◆ Dressing Gown
- ◆ Underwear
- ◆ Slippers
- ◆ Daywear or loose fitting clothes



Some other useful things to take are:

- ◆ Money, do not take lots
- ◆ Glasses
- ◆ Hearing Aids
- ◆ Dentures

Do not take:

- ◆ A large suitcase
- ◆ A large sum of money
- ◆ Jewellery
- ◆ Portable Television
- ◆ Radio
- ◆ Alarm Clock
- ◆ Mobile phones

